



Semiannual report

John Hancock New Opportunities Fund

U.S. equity

February 28, 2023

A *message* to shareholders



Dear shareholder,

The U.S. stock market was volatile during the six months ended February 28, 2023, buffeted by shifting expectations around inflation, the U.S. Federal Reserve's (Fed's) interest-rate moves, and the pace of economic growth. To tame inflation, the Fed continued to increase its overnight lending rate during the period. These moves fueled mounting concern that the economy could be headed for a recession and offset periodic optimism that the central bank was nearing the end of its rate hikes. Worries over soaring inflation in the eurozone, the Russian invasion of Ukraine, and the impact of less restrictive COVID-19 policies in China also kept the market in check.

Despite starting off the new year with gains, stocks declined in February as continued inflation and mixed economic data curbed hopes that the Fed would slow its pace of interest-rate hikes any time soon. Mounting expectations for how high rates would go and how long they would stay elevated further pressured stocks.

In these uncertain times, your financial professional can assist with positioning your portfolio so that it's sufficiently diversified to help meet your long-term objectives and to withstand the inevitable bouts of market volatility along the way.

On behalf of everyone at John Hancock Investment Management, I'd like to take this opportunity to welcome new shareholders and thank existing shareholders for the continued trust you've placed in us.

Sincerely,

A handwritten signature in black ink that reads "Andrew Arnott".

Andrew G. Arnott

Global Head of Retail,
Manulife Investment Management

President and CEO,
John Hancock Investment Management
Head of Wealth and Asset Management,
United States and Europe

This commentary reflects the CEO's views as of this report's period end and are subject to change at any time. Diversification does not guarantee investment returns and does not eliminate risk of loss. All investments entail risks, including the possible loss of principal. For more up-to-date information, you can visit our website at jhinvestments.com.

John Hancock

New Opportunities Fund

Table of contents

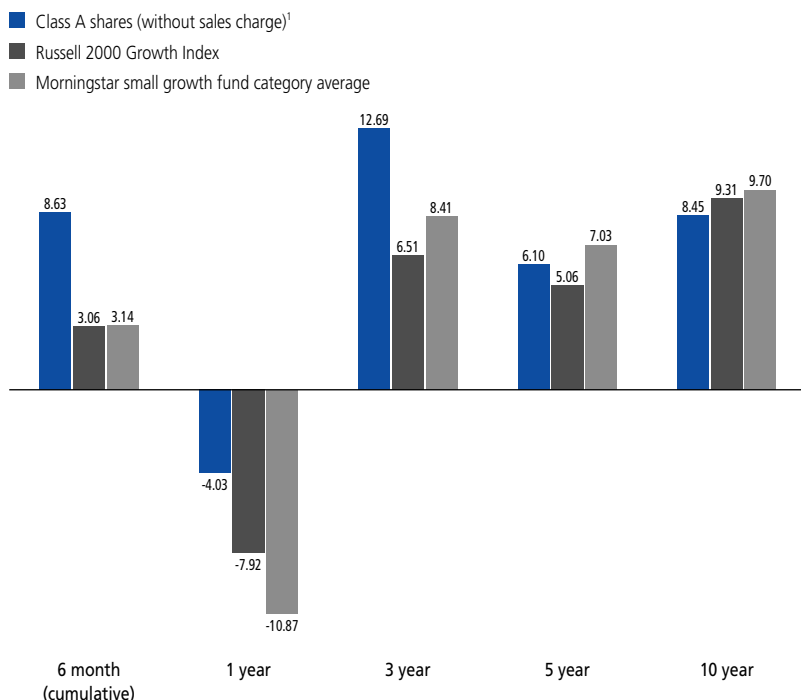
- 2** Your fund at a glance
- 3** Portfolio summary
- 4** Your expenses
- 6** Fund's investments
- 10** Financial statements
- 13** Financial highlights
- 20** Notes to financial statements
- 27** Special shareholder meeting
- 28** More information

Your fund at a glance

INVESTMENT OBJECTIVE

The fund seeks long-term capital appreciation.

AVERAGE ANNUAL TOTAL RETURNS AS OF 2/28/2023 (%)



The Russell 2000 Growth Index tracks the performance of publicly traded small-cap companies in the United States with higher price-to-book ratios and higher forecasted growth values.

It is not possible to invest directly in an index. Index figures do not reflect expenses or sales charges, which would result in lower returns.

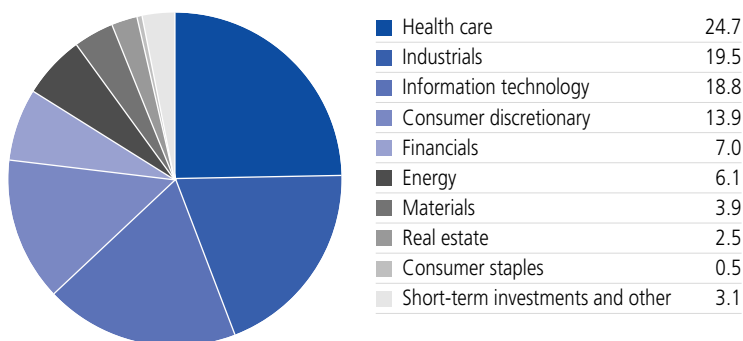
The fund's Morningstar category average is a group of funds with similar investment objectives and strategies and is the equal-weighted return of all funds per category. Morningstar places funds in certain categories based on their historical portfolio holdings. Figures from Morningstar, Inc. include reinvested distributions and do not take into account sales charges. Actual load-adjusted performance is lower.

¹Class A shares were first offered on 5-27-15. Returns prior to this date are those of Class NAV shares that have not been adjusted for class-specific expenses; otherwise, returns would vary.

The past performance shown here reflects reinvested distributions and the beneficial effect of any expense reductions, and does not guarantee future results. Performance of the other share classes will vary based on the difference in the fees and expenses of those classes. Shares will fluctuate in value and, when redeemed, may be worth more or less than their original cost. Current month-end performance may be lower or higher than the performance cited, and can be found at jhinvestments.com or by calling 800-225-5291. For further information on the fund's objectives, risks, and strategy, see the fund's prospectus.

Portfolio summary

SECTOR COMPOSITION AS OF 2/28/2023 (% of net assets)



TOP 10 HOLDINGS AS OF 2/28/2023 (% of net assets)

Atkore, Inc.	3.1
Novanta, Inc.	2.4
Fox Factory Holding Corp.	2.3
Grand Canyon Education, Inc.	2.0
SiteOne Landscape Supply, Inc.	2.0
Matador Resources Company	2.0
RBC Bearings, Inc.	1.9
Hexcel Corp.	1.9
Silicon Laboratories, Inc.	1.9
The Shyft Group, Inc.	1.8
TOTAL	21.3

Cash and cash equivalents are not included.

Notes about risk

The fund is subject to various risks as described in the fund's prospectus. Political tensions and armed conflicts, including the Russian invasion of Ukraine, and any resulting economic sanctions on entities and/or individuals of a particular country could lead such a country into an economic recession. The COVID-19 disease has resulted in significant disruptions to global business activity. A widespread health crisis such as a global pandemic could cause substantial market volatility, exchange-trading suspensions, and closures, which may lead to less liquidity in certain instruments, industries, sectors, or the markets, generally, and may ultimately affect fund performance. For more information, please refer to the "Principal risks" section of the prospectus.

Your expenses

These examples are intended to help you understand your ongoing operating expenses of investing in the fund so you can compare these costs with the ongoing costs of investing in other mutual funds.

Understanding fund expenses

As a shareholder of the fund, you incur two types of costs:

- **Transaction costs**, which include sales charges (loads) on purchases or redemptions (varies by share class), minimum account fee charge, etc.
- **Ongoing operating expenses**, including management fees, distribution and service fees (if applicable), and other fund expenses.

We are presenting only your ongoing operating expenses here.

Actual expenses/actual returns

The first line of each share class in the table on the following page is intended to provide information about the fund's actual ongoing operating expenses, and is based on the fund's actual return. It assumes an account value of \$1,000.00 on September 1, 2022, with the same investment held until February 28, 2023.

Together with the value of your account, you may use this information to estimate the operating expenses that you paid over the period. Simply divide your account value at February 28, 2023, by \$1,000.00, then multiply it by the "expenses paid" for your share class from the table. For example, for an account value of \$8,600.00, the operating expenses should be calculated as follows:

Example

$$\left[\frac{\text{My account value}}{\$8,600.00} / \$1,000.00 = 8.6 \right] \times \$ \left[\begin{array}{c} \text{"expenses paid"} \\ \text{from table} \end{array} \right] = \text{My actual expenses}$$

Hypothetical example for comparison purposes

The second line of each share class in the table on the following page allows you to compare the fund's ongoing operating expenses with those of any other fund. It provides an example of the fund's hypothetical account values and hypothetical expenses based on each class's actual expense ratio and an assumed 5% annualized return before expenses (which is not the class's actual return). It assumes an account value of \$1,000.00 on September 1, 2022, with the same investment held until February 28, 2023. Look in any other fund shareholder report to find its hypothetical example and you will be able to compare these expenses. Please remember that these hypothetical account values and expenses may not be used to estimate the actual ending account balance or expenses you paid for the period.

Remember, these examples do not include any transaction costs, therefore, these examples will not help you to determine the relative total costs of owning different funds. If transaction costs were included, your expenses would have been higher. See the prospectuses for details regarding transaction costs.

SHAREHOLDER EXPENSE EXAMPLE CHART

		Account value on 9-1-2022	Ending value on 2-28-2023	Expenses paid during period ended 2-28-2023 ¹	Annualized expense ratio
Class A	Actual expenses/actual returns	\$1,000.00	\$1,086.30	\$ 6.26	1.21%
	Hypothetical example	1,000.00	1,018.80	6.06	1.21%
Class C	Actual expenses/actual returns	1,000.00	1,081.90	10.12	1.96%
	Hypothetical example	1,000.00	1,015.10	9.79	1.96%
Class I	Actual expenses/actual returns	1,000.00	1,087.40	4.97	0.96%
	Hypothetical example	1,000.00	1,020.00	4.81	0.96%
Class R2	Actual expenses/actual returns	1,000.00	1,086.20	6.62	1.28%
	Hypothetical example	1,000.00	1,018.40	6.41	1.28%
Class R4	Actual expenses/actual returns	1,000.00	1,087.20	5.38	1.04%
	Hypothetical example	1,000.00	1,019.60	5.21	1.04%
Class R6	Actual expenses/actual returns	1,000.00	1,088.40	4.45	0.86%
	Hypothetical example	1,000.00	1,020.50	4.31	0.86%
Class 1	Actual expenses/actual returns	1,000.00	1,088.00	4.66	0.90%
	Hypothetical example	1,000.00	1,020.30	4.51	0.90%

¹ Expenses are equal to the annualized expense ratio, multiplied by the average account value over the period, multiplied by 181/365 (to reflect the one-half year period).

Fund's investments

AS OF 2-28-23 (unaudited)

	Shares	Value
Common stocks 96.9%		\$297,600,175
(Cost \$239,889,555)		
Consumer discretionary 13.9%		42,710,119
Auto components 3.1%		
Dorman Products, Inc. (A)	26,052	2,423,618
Fox Factory Holding Corp. (A)	59,921	7,040,718
Diversified consumer services 2.0%		
Grand Canyon Education, Inc. (A)	55,644	6,303,909
Hotels, restaurants and leisure 4.1%		
Churchill Downs, Inc.	22,419	5,510,142
Chuy's Holdings, Inc. (A)	127,508	4,558,411
Krispy Kreme, Inc.	190,735	2,481,462
Household durables 1.0%		
TopBuild Corp. (A)	15,107	3,136,062
Internet and direct marketing retail 1.2%		
Revolve Group, Inc. (A)	135,850	3,678,818
Specialty retail 1.4%		
Lithia Motors, Inc.	16,337	4,168,876
Textiles, apparel and luxury goods 1.1%		
Oxford Industries, Inc.	28,978	3,408,103
Consumer staples 0.5%		1,604,397
Food and staples retailing 0.5%		
PriceSmart, Inc.	23,012	1,604,397
Energy 6.1%		18,740,887
Energy equipment and services 1.5%		
ChampionX Corp.	149,663	4,575,198
Oil, gas and consumable fuels 4.6%		
Earthstone Energy, Inc., Class A (A)	287,922	4,016,512
Magnolia Oil & Gas Corp., Class A	185,573	4,054,770
Matador Resources Company	113,300	6,094,407
Financials 7.0%		21,345,597
Banks 3.4%		
Ameris Bancorp	82,173	3,933,622
Atlantic Union Bankshares Corp.	60,416	2,263,183
Pinnacle Financial Partners, Inc.	56,199	4,163,784
Capital markets 3.6%		
Houlihan Lokey, Inc.	47,505	4,546,229
PJT Partners, Inc., Class A	43,590	3,438,379
Stifel Financial Corp.	44,896	3,000,400

	Shares	Value
Health care 24.7%		\$75,959,959
Biotechnology 9.2%		
Arcutis Biotherapeutics, Inc. (A)	189,131	3,060,140
BioCryst Pharmaceuticals, Inc. (A)	397,758	3,520,158
Crinetics Pharmaceuticals, Inc. (A)	157,100	3,085,444
Halozyme Therapeutics, Inc. (A)	88,604	4,252,106
Insmed, Inc. (A)	158,427	3,228,742
Oyster Point Pharma, Inc. (A)(B)	177,931	30,248
Traverse Therapeutics, Inc. (A)	156,376	3,465,292
Veracyte, Inc. (A)	104,331	2,567,586
Vericel Corp. (A)	161,550	4,912,736
Health care equipment and supplies 5.1%		
Artivion, Inc. (A)	123,837	1,639,602
AtriCure, Inc. (A)	72,629	2,796,217
Cardiovascular Systems, Inc. (A)	94,076	1,854,238
Globus Medical, Inc., Class A (A)	61,605	3,594,036
ICU Medical, Inc. (A)	14,566	2,485,542
Integra LifeSciences Holdings Corp. (A)	61,344	3,411,953
Health care providers and services 3.8%		
Acadia Healthcare Company, Inc. (A)	49,799	3,610,925
Castle Biosciences, Inc. (A)	60,244	1,516,944
HealthEquity, Inc. (A)	61,537	4,010,366
US Physical Therapy, Inc.	25,772	2,611,477
Life sciences tools and services 3.6%		
Azenta, Inc. (A)	104,442	4,583,959
CryoPort, Inc. (A)	103,603	2,244,041
Medpace Holdings, Inc. (A)	22,439	4,350,473
Pharmaceuticals 3.0%		
Intra-Cellular Therapies, Inc. (A)	80,259	3,935,099
Phathom Pharmaceuticals, Inc. (A)	176,685	1,512,424
Supernus Pharmaceuticals, Inc. (A)	97,904	3,680,211
Industrials 19.5%		59,993,282
Aerospace and defense 1.9%		
Hexcel Corp.	79,850	5,825,058
Building products 1.3%		
Gibraltar Industries, Inc. (A)	74,012	3,952,981
Electrical equipment 3.1%		
Atkore, Inc. (A)	64,435	9,408,716
Machinery 7.7%		
Alamo Group, Inc.	25,616	4,672,102
Helios Technologies, Inc.	48,718	3,300,157
RBC Bearings, Inc. (A)	25,632	5,890,490
SPX Technologies, Inc. (A)	59,900	4,219,356

	Shares	Value
Industrials (continued)		
Machinery (continued)		
The Shyft Group, Inc.	217,195	\$5,631,866
Professional services 3.5%		
CACI International, Inc., Class A (A)	12,440	3,644,920
Exponent, Inc.	51,317	5,280,519
Forrester Research, Inc. (A)	58,514	1,924,525
Trading companies and distributors 2.0%		
SiteOne Landscape Supply, Inc. (A)	42,083	6,242,592
Information technology 18.8%		57,598,124
Communications equipment 1.2%		
Viavi Solutions, Inc. (A)	333,607	3,649,661
Electronic equipment, instruments and components 2.4%		
Novanta, Inc. (A)	46,155	7,242,181
IT services 2.8%		
Flywire Corp. (A)	221,313	5,473,070
Thoughtworks Holding, Inc. (A)	447,825	3,295,992
Semiconductors and semiconductor equipment 6.1%		
Allegro MicroSystems, Inc. (A)	93,200	4,070,976
MACOM Technology Solutions Holdings, Inc. (A)	53,483	3,665,725
Power Integrations, Inc.	62,297	5,123,928
Silicon Laboratories, Inc. (A)	32,342	5,774,017
Software 6.3%		
Appfolio, Inc., Class A (A)	23,888	3,154,649
CyberArk Software, Ltd. (A)	35,600	5,153,812
Paycor HCM, Inc. (A)	173,409	4,295,341
Rapid7, Inc. (A)	44,906	2,124,054
The Descartes Systems Group, Inc. (A)	62,089	4,574,718
Materials 3.9%		11,944,824
Chemicals 3.9%		
Avient Corp.	124,020	5,410,993
Balchem Corp.	30,747	3,997,110
Quaker Chemical Corp.	12,957	2,536,721
Metals and mining 0.0%		
Ferroglobe PLC (A)(B)	11,041	0
Real estate 2.5%		7,702,986
Equity real estate investment trusts 2.5%		
Ryman Hospitality Properties, Inc.	41,590	3,858,304
STAG Industrial, Inc.	114,289	3,844,682

	Yield (%)	Shares	Value
Short-term investments 1.3%			\$3,870,070
(Cost \$3,870,070)			
Short-term funds 1.3%			3,870,070
State Street Institutional Treasury Money Market Fund, Premier Class	4.4102(C)	3,870,070	3,870,070
Total investments (Cost \$243,759,625) 98.2%			\$301,470,245
Other assets and liabilities, net 1.8%			5,490,338
Total net assets 100.0%			\$306,960,583

The percentage shown for each investment category is the total value of the category as a percentage of the net assets of the fund.

Security Abbreviations and Legend

- (A) Non-income producing security.
- (B) Security is valued using significant unobservable inputs and is classified as Level 3 in the fair value hierarchy. Refer to Note 2 to the financial statements.
- (C) The rate shown is the annualized seven-day yield as of 2-28-23.

At 2-28-23, the aggregate cost of investments for federal income tax purposes was \$244,669,731. Net unrealized appreciation aggregated to \$56,800,514, of which \$81,740,043 related to gross unrealized appreciation and \$24,939,529 related to gross unrealized depreciation.

Financial statements

STATEMENT OF ASSETS AND LIABILITIES 2-28-23 (unaudited)

Assets	
Unaffiliated investments, at value (Cost \$243,759,625)	\$301,470,245
Dividends and interest receivable	109,859
Receivable for fund shares sold	57,574
Receivable for investments sold	6,968,940
Receivable from affiliates	9
Other assets	44,954
Total assets	308,651,581
Liabilities	
Due to custodian	87
Payable for investments purchased	1,469,368
Payable for fund shares repurchased	77,191
Payable to affiliates	
Accounting and legal services fees	25,474
Transfer agent fees	25,127
Distribution and service fees	34
Trustees' fees	135
Other liabilities and accrued expenses	93,582
Total liabilities	1,690,998
Net assets	\$306,960,583
Net assets consist of	
Paid-in capital	\$241,396,512
Total distributable earnings (loss)	65,564,071
Net assets	\$306,960,583
Net asset value per share	
Based on net asset value and shares outstanding - the fund has an unlimited number of shares authorized with no par value	
Class A ($\$265,274,632 \div 10,891,377$ shares) ¹	\$24.36
Class C ($\$1,857,765 \div 82,233$ shares) ¹	\$22.59
Class I ($\$14,368,371 \div 582,393$ shares)	\$24.67
Class R2 ($\$247,969 \div 10,173$ shares)	\$24.38
Class R4 ($\$61,173 \div 2,487$ shares)	\$24.60
Class R6 ($\$312,986 \div 12,632$ shares)	\$24.78
Class 1 ($\$24,837,687 \div 993,690$ shares)	\$25.00
Maximum offering price per share	
Class A (net asset value per share \div 95%) ²	\$25.64

¹ Redemption price per share is equal to net asset value less any applicable contingent deferred sales charge.

² On single retail sales of less than \$50,000. On sales of \$50,000 or more and on group sales the offering price is reduced.

STATEMENT OF OPERATIONS For the six months ended 2-28-23 (unaudited)

Investment income	
Dividends	\$669,424
Interest	106,511
Total investment income	775,935
Expenses	
Investment management fees	1,064,548
Distribution and service fees	332,061
Accounting and legal services fees	28,067
Transfer agent fees	149,400
Trustees' fees	3,502
Custodian fees	21,299
State registration fees	51,868
Printing and postage	23,397
Professional fees	45,092
Other	14,698
Total expenses	1,733,932
Less expense reductions	(10,398)
Net expenses	1,723,534
Net investment loss	(947,599)
Realized and unrealized gain (loss)	
Net realized gain (loss) on	
Unaffiliated investments	20,858,933
	20,858,933
Change in net unrealized appreciation (depreciation) of	
Unaffiliated investments	4,501,964
	4,501,964
Net realized and unrealized gain	25,360,897
Increase in net assets from operations	\$24,413,298

STATEMENTS OF CHANGES IN NET ASSETS

	Six months ended 2-28-23 (unaudited)	Year ended 8-31-22
Increase (decrease) in net assets		
From operations		
Net investment loss	\$(947,599)	\$(2,576,020)
Net realized gain	20,858,933	24,967,735
Change in net unrealized appreciation (depreciation)	4,501,964	(101,736,167)
Increase (decrease) in net assets resulting from operations	24,413,298	(79,344,452)
Distributions to shareholders		
From earnings		
Class A	(22,532,438)	(26,558,227)
Class C	(168,683)	(240,162)
Class I	(1,061,240)	(1,278,122)
Class R2	(20,339)	(18,904)
Class R4	(5,372)	(6,272)
Class R6	(29,443)	(30,910)
Class 1	(2,029,166)	(2,585,554)
Total distributions	(25,846,681)	(30,718,151)
From fund share transactions	13,256,510	(7,850,198)
Total increase (decrease)	11,823,127	(117,912,801)
Net assets		
Beginning of period	295,137,456	413,050,257
End of period	\$306,960,583	\$295,137,456

Financial highlights

CLASS A SHARES Period ended	2-28-23¹	8-31-22	8-31-21	8-31-20	8-31-19	8-31-18
Per share operating performance						
Net asset value, beginning of period	\$24.71	\$33.80	\$25.18	\$22.20	\$31.99	\$27.28
Net investment income (loss) ²	(0.08)	(0.22)	(0.24)	(0.16)	0.02	0.01
Net realized and unrealized gain (loss) on investments	1.96	(6.24)	9.69	3.92	(5.49)	6.75
Total from investment operations	1.88	(6.46)	9.45	3.76	(5.47)	6.76
Less distributions						
From net investment income	—	—	—	—	(0.01)	(0.03)
From net realized gain	(2.23)	(2.63)	(0.83)	(0.78)	(4.31)	(2.02)
Total distributions	(2.23)	(2.63)	(0.83)	(0.78)	(4.32)	(2.05)
Net asset value, end of period	\$24.36	\$24.71	\$33.80	\$25.18	\$22.20	\$31.99
Total return (%)^{3,4}	8.63⁵	(20.40)	38.04	17.20	(15.32)	25.66
Ratios and supplemental data						
Net assets, end of period (in millions)	\$265	\$257	\$347	\$272	\$264	\$352
Ratios (as a percentage of average net assets):						
Expenses before reductions	1.22 ⁶	1.20	1.20	1.26	1.42	1.40
Expenses including reductions	1.21 ⁶	1.19	1.19	1.22	1.20	1.20
Net investment income (loss)	(0.68) ⁶	(0.78)	(0.81)	(0.72)	0.08	0.02
Portfolio turnover (%)	16	23	28	25	73	52

¹ Six months ended 2-28-23. Unaudited.

² Based on average daily shares outstanding.

³ Total returns would have been lower had certain expenses not been reduced during the applicable periods.

⁴ Does not reflect the effect of sales charges, if any.

⁵ Not annualized.

⁶ Annualized.

CLASS C SHARES Period ended	2-28-23¹	8-31-22	8-31-21	8-31-20	8-31-19	8-31-18
Per share operating performance						
Net asset value, beginning of period	\$23.17	\$32.09	\$24.12	\$21.45	\$31.27	\$26.86
Net investment loss ²	(0.16)	(0.41)	(0.44)	(0.31)	(0.15)	(0.19)
Net realized and unrealized gain (loss) on investments	1.81	(5.88)	9.24	3.76	(5.36)	6.62
Total from investment operations	1.65	(6.29)	8.80	3.45	(5.51)	6.43
Less distributions						
From net realized gain	(2.23)	(2.63)	(0.83)	(0.78)	(4.31)	(2.02)
Net asset value, end of period	\$22.59	\$23.17	\$32.09	\$24.12	\$21.45	\$31.27
Total return (%)^{3,4}	8.19⁵	(21.00)	37.00	16.33	(15.90)	24.76
Ratios and supplemental data						
Net assets, end of period (in millions)	\$2	\$2	\$3	\$4	\$4	\$9
Ratios (as a percentage of average net assets):						
Expenses before reductions	1.97 ⁶	1.95	1.95	2.01	2.13	2.10
Expenses including reductions	1.96 ⁶	1.94	1.94	1.97	1.91	1.90
Net investment loss	(1.43) ⁶	(1.53)	(1.56)	(1.47)	(0.63)	(0.68)
Portfolio turnover (%)	16	23	28	25	73	52

¹ Six months ended 2-28-23. Unaudited.

² Based on average daily shares outstanding.

³ Total returns would have been lower had certain expenses not been reduced during the applicable periods.

⁴ Does not reflect the effect of sales charges, if any.

⁵ Not annualized.

⁶ Annualized.

CLASS I SHARES Period ended	2-28-23¹	8-31-22	8-31-21	8-31-20	8-31-19	8-31-18
Per share operating performance						
Net asset value, beginning of period	\$24.97	\$34.05	\$25.29	\$22.24	\$32.07	\$27.33
Net investment income (loss) ²	(0.05)	(0.15)	(0.18)	(0.10)	0.09	0.09
Net realized and unrealized gain (loss) on investments	1.98	(6.30)	9.77	3.93	(5.51)	6.78
Total from investment operations	1.93	(6.45)	9.59	3.83	(5.42)	6.87
Less distributions						
From net investment income	—	—	—	—	(0.10)	(0.11)
From net realized gain	(2.23)	(2.63)	(0.83)	(0.78)	(4.31)	(2.02)
Total distributions	(2.23)	(2.63)	(0.83)	(0.78)	(4.41)	(2.13)
Net asset value, end of period	\$24.67	\$24.97	\$34.05	\$25.29	\$22.24	\$32.07
Total return (%)³	8.74⁴	(20.21)	38.44	17.49	(15.08)	26.06
Ratios and supplemental data						
Net assets, end of period (in millions)	\$14	\$12	\$25	\$10	\$10	\$15
Ratios (as a percentage of average net assets):						
Expenses before reductions	0.97 ⁵	0.95	0.95	1.01	1.14	1.11
Expenses including reductions	0.96 ⁵	0.94	0.94	0.97	0.90	0.90
Net investment income (loss)	(0.43) ⁵	(0.52)	(0.57)	(0.46)	0.38	0.32
Portfolio turnover (%)	16	23	28	25	73	52

¹ Six months ended 2-28-23. Unaudited.

² Based on average daily shares outstanding.

³ Total returns would have been lower had certain expenses not been reduced during the applicable periods.

⁴ Not annualized.

⁵ Annualized.

CLASS R2 SHARES Period ended	2-28-23¹	8-31-22	8-31-21	8-31-20	8-31-19	8-31-18
Per share operating performance						
Net asset value, beginning of period	\$24.74	\$33.85	\$25.21	\$22.22	\$32.02	\$27.30
Net investment income (loss) ²	(0.09)	(0.23)	(0.26)	(0.15)	0.04	0.04
Net realized and unrealized gain (loss) on investments	1.96	(6.25)	9.73	3.92	(5.49)	6.76
Total from investment operations	1.87	(6.48)	9.47	3.77	(5.45)	6.80
Less distributions						
From net investment income	—	—	—	—	(0.04)	(0.06)
From net realized gain	(2.23)	(2.63)	(0.83)	(0.78)	(4.31)	(2.02)
Total distributions	(2.23)	(2.63)	(0.83)	(0.78)	(4.35)	(2.08)
Net asset value, end of period	\$24.38	\$24.74	\$33.85	\$25.21	\$22.22	\$32.02
Total return (%)³	8.62⁴	(20.44)	38.03	17.23	(15.23)	25.78
Ratios and supplemental data						
Net assets, end of period (in millions)	\$— ⁵	\$— ⁵	\$— ⁵	\$— ⁵	\$— ⁵	\$— ⁵
Ratios (as a percentage of average net assets):						
Expenses before reductions	1.28 ⁶	1.24	1.22	1.22	1.33	1.29
Expenses including reductions	1.28 ⁶	1.23	1.21	1.18	1.11	1.09
Net investment income (loss)	(0.74) ⁶	(0.81)	(0.84)	(0.67)	0.18	0.14
Portfolio turnover (%)	16	23	28	25	73	52

¹ Six months ended 2-28-23. Unaudited.

² Based on average daily shares outstanding.

³ Total returns would have been lower had certain expenses not been reduced during the applicable periods.

⁴ Not annualized.

⁵ Less than \$500,000.

⁶ Annualized.

CLASS R4 SHARES Period ended	2-28-23¹	8-31-22	8-31-21	8-31-20	8-31-19	8-31-18
Per share operating performance						
Net asset value, beginning of period	\$24.91	\$34.00	\$25.27	\$22.23	\$32.05	\$27.34
Net investment income (loss) ²	(0.06)	(0.17)	(0.19)	(0.11)	0.08	0.08
Net realized and unrealized gain (loss) on investments	1.98	(6.29)	9.75	3.93	(5.51)	6.75
Total from investment operations	1.92	(6.46)	9.56	3.82	(5.43)	6.83
Less distributions						
From net investment income	—	—	—	—	(0.08)	(0.10)
From net realized gain	(2.23)	(2.63)	(0.83)	(0.78)	(4.31)	(2.02)
Total distributions	(2.23)	(2.63)	(0.83)	(0.78)	(4.39)	(2.12)
Net asset value, end of period	\$24.60	\$24.91	\$34.00	\$25.27	\$22.23	\$32.05
Total return (%)³	8.72⁴	(20.28)	38.35	17.45	(15.11)	25.92
Ratios and supplemental data						
Net assets, end of period (in millions)	\$— ⁵	\$— ⁵	\$— ⁵	\$— ⁵	\$— ⁵	\$— ⁵
Ratios (as a percentage of average net assets):						
Expenses before reductions	1.15 ⁶	1.12	1.10	1.15	1.28	1.35
Expenses including reductions	1.04 ⁶	1.01	1.00	1.01	0.96	0.96
Net investment income (loss)	(0.51) ⁶	(0.60)	(0.63)	(0.51)	0.33	0.27
Portfolio turnover (%)	16	23	28	25	73	52

¹ Six months ended 2-28-23. Unaudited.

² Based on average daily shares outstanding.

³ Total returns would have been lower had certain expenses not been reduced during the applicable periods.

⁴ Not annualized.

⁵ Less than \$500,000.

⁶ Annualized.

CLASS R6 SHARES Period ended	2-28-23¹	8-31-22	8-31-21	8-31-20	8-31-19	8-31-18
Per share operating performance						
Net asset value, beginning of period	\$25.06	\$34.12	\$25.32	\$22.24	\$32.07	\$27.34
Net investment income (loss) ²	(0.04)	(0.12)	(0.14)	(0.08)	0.11	0.12
Net realized and unrealized gain (loss) on investments	1.99	(6.31)	9.77	3.94	(5.51)	6.77
Total from investment operations	1.95	(6.43)	9.63	3.86	(5.40)	6.89
Less distributions						
From net investment income	—	—	—	—	(0.12)	(0.14)
From net realized gain	(2.23)	(2.63)	(0.83)	(0.78)	(4.31)	(2.02)
Total distributions	(2.23)	(2.63)	(0.83)	(0.78)	(4.43)	(2.16)
Net asset value, end of period	\$24.78	\$25.06	\$34.12	\$25.32	\$22.24	\$32.07
Total return (%)³	8.84⁴	(20.14)	38.55	17.62	(14.99)	26.16
Ratios and supplemental data						
Net assets, end of period (in millions)	\$— ⁵	\$— ⁵	\$— ⁵	\$— ⁵	\$— ⁵	\$2
Ratios (as a percentage of average net assets):						
Expenses before reductions	0.87 ⁶	0.84	0.84	0.90	1.03	1.00
Expenses including reductions	0.86 ⁶	0.83	0.83	0.86	0.81	0.80
Net investment income (loss)	(0.33) ⁶	(0.42)	(0.46)	(0.36)	0.45	0.42
Portfolio turnover (%)	16	23	28	25	73	52

¹ Six months ended 2-28-23. Unaudited.

² Based on average daily shares outstanding.

³ Total returns would have been lower had certain expenses not been reduced during the applicable periods.

⁴ Not annualized.

⁵ Less than \$500,000.

⁶ Annualized.

CLASS 1 SHARES Period ended	2-28-23¹	8-31-22	8-31-21	8-31-20	8-31-19	8-31-18
Per share operating performance						
Net asset value, beginning of period	\$25.26	\$34.39	\$25.53	\$22.42	\$32.29	\$27.51
Net investment income (loss) ²	(0.05)	(0.14)	(0.15)	(0.09)	0.11	0.11
Net realized and unrealized gain (loss) on investments	2.02	(6.36)	9.84	3.98	(5.56)	6.82
Total from investment operations	1.97	(6.50)	9.69	3.89	(5.45)	6.93
Less distributions						
From net investment income	—	—	—	—	(0.11)	(0.13)
From net realized gain	(2.23)	(2.63)	(0.83)	(0.78)	(4.31)	(2.02)
Total distributions	(2.23)	(2.63)	(0.83)	(0.78)	(4.42)	(2.15)
Net asset value, end of period	\$25.00	\$25.26	\$34.39	\$25.53	\$22.42	\$32.29
Total return (%)³	8.80⁴	(20.16)	38.47	17.62	(15.04)	26.10
Ratios and supplemental data						
Net assets, end of period (in millions)	\$25	\$24	\$37	\$33	\$42	\$59
Ratios (as a percentage of average net assets):						
Expenses before reductions	0.91 ⁵	0.88	0.88	0.94	1.06	1.04
Expenses including reductions	0.90 ⁵	0.87	0.87	0.90	0.84	0.84
Net investment income (loss)	(0.37) ⁵	(0.46)	(0.50)	(0.39)	0.44	0.38
Portfolio turnover (%)	16	23	28	25	73	52

¹ Six months ended 2-28-23. Unaudited.

² Based on average daily shares outstanding.

³ Total returns would have been lower had certain expenses not been reduced during the applicable periods.

⁴ Not annualized.

⁵ Annualized.

Notes to financial statements (unaudited)

Note 1 — Organization

John Hancock New Opportunities Fund (the fund) is a series of John Hancock Funds II (the Trust), an open-end management investment company organized as a Massachusetts business trust and registered under the Investment Company Act of 1940, as amended (the 1940 Act). The investment objective of the fund is to seek long-term capital appreciation.

The fund may offer multiple classes of shares. The shares currently outstanding are detailed in the Statement of assets and liabilities. Class A and Class C shares are offered to all investors. Class I shares are offered to institutions and certain investors. Class R2 and Class R4 shares are available only to certain retirement and 529 plans. Class R6 shares are only available to certain retirement plans, institutions and other investors. Class 1 shares are offered only to certain affiliates of Manulife Financial Corporation. Class C shares convert to Class A shares eight years after purchase (certain exclusions may apply). Shareholders of each class have exclusive voting rights to matters that affect that class. The distribution and service fees, if any, and transfer agent fees for each class may differ.

Note 2 — Significant accounting policies

The financial statements have been prepared in conformity with accounting principles generally accepted in the United States of America (US GAAP), which require management to make certain estimates and assumptions as of the date of the financial statements. Actual results could differ from those estimates and those differences could be significant. The fund qualifies as an investment company under Topic 946 of Accounting Standards Codification of US GAAP.

Events or transactions occurring after the end of the fiscal period through the date that the financial statements were issued have been evaluated in the preparation of the financial statements. The following summarizes the significant accounting policies of the fund:

Security valuation. Investments are stated at value as of the scheduled close of regular trading on the New York Stock Exchange (NYSE), normally at 4:00 P.M., Eastern Time. In case of emergency or other disruption resulting in the NYSE not opening for trading or the NYSE closing at a time other than the regularly scheduled close, the net asset value (NAV) may be determined as of the regularly scheduled close of the NYSE pursuant to the Advisor's Valuation Policies and Procedures.

In order to value the securities, the fund uses the following valuation techniques: Equity securities, including exchange-traded or closed-end funds, are typically valued at the last sale price or official closing price on the exchange or principal market where the security trades. In the event there were no sales during the day or closing prices are not available, the securities are valued using the last available bid price. Investments by the fund in open-end mutual funds are valued at their respective NAVs each business day.

In certain instances, the Pricing Committee of the Advisor may determine to value equity securities using prices obtained from another exchange or market if trading on the exchange or market on which prices are typically obtained did not open for trading as scheduled, or if trading closed earlier than scheduled, and trading occurred as normal on another exchange or market.

Other portfolio securities and assets, for which reliable market quotations are not readily available, are valued at fair value as determined in good faith by the Pricing Committee following procedures established by the Advisor and adopted by the Board of Trustees. The frequency with which these fair valuation procedures are used cannot be predicted and fair value of securities may differ significantly from the value that would have been used had a ready market for such securities existed.

The fund uses a three tier hierarchy to prioritize the pricing assumptions, referred to as inputs, used in valuation techniques to measure fair value. Level 1 includes securities valued using quoted prices in active markets for identical securities, including registered investment companies. Level 2 includes securities valued using other significant observable inputs. Observable inputs may include quoted prices for similar securities, interest rates,

prepayment speeds and credit risk. Prices for securities valued using these inputs are received from independent pricing vendors and brokers and are based on an evaluation of the inputs described. Level 3 includes securities valued using significant unobservable inputs when market prices are not readily available or reliable, including the Advisor's assumptions in determining the fair value of investments. Factors used in determining value may include market or issuer specific events or trends, changes in interest rates and credit quality. The inputs or methodology used for valuing securities are not necessarily an indication of the risks associated with investing in those securities. Changes in valuation techniques and related inputs may result in transfers into or out of an assigned level within the disclosure hierarchy.

The following is a summary of the values by input classification of the fund's investments as of February 28, 2023, by major security category or type:

	Total value at 2-28-23	Level 1 quoted price	Level 2 significant observable inputs	Level 3 significant unobservable inputs
Investments in securities:				
Assets				
Common stocks				
Consumer discretionary	\$42,710,119	\$42,710,119	—	—
Consumer staples	1,604,397	1,604,397	—	—
Energy	18,740,887	18,740,887	—	—
Financials	21,345,597	21,345,597	—	—
Health care	75,959,959	75,929,711	—	\$30,248
Industrials	59,993,282	59,993,282	—	—
Information technology	57,598,124	57,598,124	—	—
Materials	11,944,824	11,944,824	—	—
Real estate	7,702,986	7,702,986	—	—
Short-term investments	3,870,070	3,870,070	—	—
Total investments in securities	\$301,470,245	\$301,439,997	—	\$30,248

Level 3 includes securities valued at \$0. Refer to Fund's investments.

Real estate investment trusts. The fund may invest in real estate investment trusts (REITs). Distributions from REITs may be recorded as income and subsequently characterized by the REIT at the end of their fiscal year as a reduction of cost of investments and/or as a realized gain. As a result, the fund will estimate the components of distributions from these securities. Such estimates are revised when the actual components of the distributions are known.

Security transactions and related investment income. Investment security transactions are accounted for on a trade date plus one basis for daily NAV calculations. However, for financial reporting purposes, investment transactions are reported on trade date. Interest income is accrued as earned. Dividend income is recorded on ex-date, except for dividends of certain foreign securities where the dividend may not be known until after the ex-date. In those cases, dividend income, net of withholding taxes, is recorded when the fund becomes aware of the dividends. Non-cash dividends, if any, are recorded at the fair market value of the securities received. Gains and losses on securities sold are determined on the basis of identified cost and may include proceeds from litigation.

Overdraft. The fund may have the ability to borrow from banks for temporary or emergency purposes, including meeting redemption requests that otherwise might require the untimely sale of securities. Pursuant to the fund's custodian agreement, the custodian may loan money to the fund to make properly authorized payments. The fund is obligated to repay the custodian for any overdraft, including any related costs or expenses. The custodian may

have a lien, security interest or security entitlement in any fund property that is not otherwise segregated or pledged, to the extent of any overdraft, and to the maximum extent permitted by law. Overdrafts at period end are presented under the caption Due to custodian in the Statement of assets and liabilities.

Line of credit. The fund and other affiliated funds have entered into a syndicated line of credit agreement with Citibank, N.A. as the administrative agent that enables them to participate in a \$1 billion unsecured committed line of credit. Excluding commitments designated for a certain fund and subject to the needs of all other affiliated funds, the fund can borrow up to an aggregate commitment amount of \$750 million, subject to asset coverage and other limitations as specified in the agreement. A commitment fee payable at the end of each calendar quarter, based on the average daily unused portion of the line of credit, is charged to each participating fund based on a combination of fixed and asset-based allocations and is reflected in Other expenses on the Statement of operations. For the six months ended February 28, 2023, the fund had no borrowings under the line of credit. Commitment fees for the six months ended February 28, 2023 were \$1,921.

Expenses. Within the John Hancock group of funds complex, expenses that are directly attributable to an individual fund are allocated to such fund. Expenses that are not readily attributable to a specific fund are allocated among all funds in an equitable manner, taking into consideration, among other things, the nature and type of expense and the fund's relative net assets. Expense estimates are accrued in the period to which they relate and adjustments are made when actual amounts are known.

Class allocations. Income, common expenses and realized and unrealized gains (losses) are determined at the fund level and allocated daily to each class of shares based on the net assets of the class. Class-specific expenses, such as distribution and service fees, if any, and transfer agent fees, for all classes, are charged daily at the class level based on the net assets of each class and the specific expense rates applicable to each class.

Federal income taxes. The fund intends to continue to qualify as a regulated investment company by complying with the applicable provisions of the Internal Revenue Code and will not be subject to federal income tax on taxable income that is distributed to shareholders. Therefore, no federal income tax provision is required.

As of August 31, 2022, the fund had no uncertain tax positions that would require financial statement recognition, derecognition or disclosure. The fund's federal tax returns are subject to examination by the Internal Revenue Service for a period of three years.

Distribution of income and gains. Distributions to shareholders from net investment income and net realized gains, if any, are recorded on the ex-date. The fund generally declares and pays dividends annually. Capital gain distributions, if any, are typically distributed annually.

Distributions paid by the fund with respect to each class of shares are calculated in the same manner, at the same time and in the same amount, except for the effect of class level expenses that may be applied differently to each class.

Such distributions, on a tax basis, are determined in conformity with income tax regulations, which may differ from US GAAP. Distributions in excess of tax basis earnings and profits, if any, are reported in the fund's financial statements as a return of capital. The final determination of tax characteristics of the fund's distribution will occur at the end of the year and will subsequently be reported to shareholders.

Capital accounts within the financial statements are adjusted for permanent book-tax differences. These adjustments have no impact on net assets or the results of operations. Temporary book-tax differences, if any, will reverse in a subsequent period. Book-tax differences are primarily attributable to net operating losses and wash sale loss deferrals.

Note 3 — Guarantees and indemnifications

Under the Trust’s organizational documents, its Officers and Trustees are indemnified against certain liabilities arising out of the performance of their duties to the Trust, including the fund. Additionally, in the normal course of business, the fund enters into contracts with service providers that contain general indemnification clauses. The fund’s maximum exposure under these arrangements is unknown, as this would involve future claims that may be made against the fund that have not yet occurred. The risk of material loss from such claims is considered remote.

Note 4 — Fees and transactions with affiliates

John Hancock Investment Management LLC (the Advisor) serves as investment advisor for the fund. John Hancock Investment Management Distributors LLC (the Distributor), an affiliate of the Advisor, serves as principal underwriter of the fund. The Advisor and the Distributor are indirect, principally owned subsidiaries of John Hancock Life Insurance Company (U.S.A.), which in turn is a subsidiary of Manulife Financial Corporation.

Management fee. The fund has an investment management agreement with the Advisor under which the fund pays a daily management fee to the Advisor equivalent on an annual basis to the sum of: (a) 0.770% of the first \$50 million of the fund’s aggregate daily net assets; (b) 0.740% of the next \$50 million of the fund’s aggregate daily net assets; (c) 0.720% of the next \$300 million of the fund’s aggregate daily net assets and (d) 0.720% on all asset levels when aggregate daily net assets exceed \$400 million. Aggregate net assets include the net assets of the fund and a portion of the net assets of Small Cap Opportunities Trust, a series of John Hancock Variable Insurance Trust, managed by GW&K Investment Management, LLC. The Advisor has a subadvisory agreement with GW&K Investment Management, LLC. The fund is not responsible for payment of the subadvisory fees.

The Advisor has contractually agreed to waive a portion of its management fee and/or reimburse expenses for certain funds of the John Hancock group of funds complex, including the fund (the participating portfolios). This waiver is based upon aggregate net assets of all the participating portfolios. The amount of the reimbursement is calculated daily and allocated among all the participating portfolios in proportion to the daily net assets of each fund. During the six months ended February 28, 2023, this waiver amounted to 0.01% of the fund’s average daily net assets, on an annualized basis. This arrangement expires on July 31, 2024, unless renewed by mutual agreement of the fund and the Advisor based upon a determination that this is appropriate under the circumstances at that time.

For the six months ended February 28, 2023, the expense reductions described above amounted to the following:

Class	Expense reduction	Class	Expense reduction
Class A	\$9,007	Class R4	\$2
Class C	64	Class R6	12
Class I	443	Class 1	833
Class R2	8	Total	\$10,369

Expenses waived or reimbursed in the current fiscal period are not subject to recapture in future fiscal periods.

The investment management fees, including the impact of the waivers and reimbursements as described above, incurred for the six months ended February 28, 2023, were equivalent to a net annual effective rate of 0.72% of the fund’s average daily net assets.

Accounting and legal services. Pursuant to a service agreement, the fund reimburses the Advisor for all expenses associated with providing the administrative, financial, legal, compliance, accounting and recordkeeping services to the fund, including the preparation of all tax returns, periodic reports to shareholders and regulatory reports, among other services. These expenses are allocated to each share class based on its relative net assets at the time the expense was incurred. These accounting and legal services fees incurred, for the six months ended February 28, 2023, amounted to an annual rate of 0.02% of the fund’s average daily net assets.

Distribution and service plans. The fund has a distribution agreement with the Distributor. The fund has adopted distribution and service plans for certain classes as detailed below pursuant to Rule 12b-1 under the 1940 Act, to pay the Distributor for services provided as the distributor of shares of the fund. In addition, under a service plan for certain classes as detailed below, the fund pays for certain other services. The fund may pay up to the following contractual rates of distribution and service fees under these arrangements, expressed as an annual percentage of average daily net assets for each class of the fund's shares:

Class	Rule 12b-1 Fee	Service fee
Class A	0.25%	—
Class C	1.00%	—
Class R2	0.25%	0.25%
Class R4	0.25%	0.10%
Class I	0.05%	—

The fund's Distributor has contractually agreed to waive 0.10% of Rule 12b-1 fees for Class R4 shares. The current waiver agreement expires on December 31, 2023, unless renewed by mutual agreement of the fund and the Distributor based upon a determination that this is appropriate under the circumstances at the time. This contractual waiver amounted to \$29 for Class R4 shares for the six months ended February 28, 2023.

Sales charges. Class A shares are assessed up-front sales charges, which resulted in payments to the Distributor amounting to \$13,593 for the six months ended February 28, 2023. Of this amount, \$2,274 was retained and used for printing prospectuses, advertising, sales literature and other purposes and \$11,319 was paid as sales commissions to broker-dealers.

Class A and Class C shares may be subject to contingent deferred sales charges (CDSCs). Certain Class A shares purchased, including those that are acquired through purchases of \$1 million or more, and redeemed within one year of purchase are subject to a 1.00% sales charge. Class C shares that are redeemed within one year of purchase are subject to a 1.00% CDSC. CDSCs are applied to the lesser of the current market value at the time of redemption or the original purchase cost of the shares being redeemed. Proceeds from CDSCs are used to compensate the Distributor for providing distribution-related services in connection with the sale of these shares. During the six months ended February 28, 2023, CDSCs received by the Distributor amounted to \$1 and \$32 for Class A and Class C shares, respectively.

Transfer agent fees. The John Hancock group of funds has a complex-wide transfer agent agreement with John Hancock Signature Services, Inc. (Signature Services), an affiliate of the Advisor. The transfer agent fees paid to Signature Services are determined based on the cost to Signature Services (Signature Services Cost) of providing recordkeeping services. It also includes out-of-pocket expenses, including payments made to third-parties for recordkeeping services provided to their clients who invest in one or more John Hancock funds. In addition, Signature Services Cost may be reduced by certain fees that Signature Services receives in connection with retirement and small accounts. Signature Services Cost is calculated monthly and allocated, as applicable, to five categories of share classes: Retail Share and Institutional Share Classes of Non-Municipal Bond Funds, Class R6 Shares, Retirement Share Classes and Municipal Bond Share Classes. Within each of these categories, the applicable costs are allocated to the affected John Hancock affiliated funds and/or classes, based on the relative average daily net assets.

Class level expenses. Class level expenses for the six months ended February 28, 2023 were as follows:

Class	Distribution and service fees	Transfer agent fees
Class A	\$316,582	\$141,423
Class C	9,070	1,011
Class I	—	6,939

Class	Distribution and service fees	Transfer agent fees
Class R2	\$469	\$10
Class R4	83	3
Class R6	—	14
Class 1	5,857	—
Total	\$332,061	\$149,400

Trustee expenses. The fund compensates each Trustee who is not an employee of the Advisor or its affiliates. The costs of paying Trustee compensation and expenses are allocated to the fund based on its net assets relative to other funds within the John Hancock group of funds complex.

Note 5 — Fund share transactions

Transactions in fund shares for the six months ended February 28, 2023 and for the year ended August 31, 2022 were as follows:

	Six Months Ended 2-28-23		Year Ended 8-31-22	
	Shares	Amount	Shares	Amount
Class A shares				
Sold	64,812	\$1,573,019	188,661	\$5,417,191
Distributions reinvested	977,357	21,374,808	848,537	25,142,153
Repurchased	(541,265)	(13,049,379)	(911,924)	(25,997,518)
Net increase	500,904	\$9,898,448	125,274	\$4,561,826
Class C shares				
Sold	2,289	\$50,932	6,137	\$167,532
Distributions reinvested	8,305	168,683	8,599	240,162
Repurchased	(12,780)	(287,198)	(27,868)	(735,839)
Net decrease	(2,186)	\$(67,583)	(13,132)	\$(328,145)
Class I shares				
Sold	133,271	\$3,175,169	67,940	\$2,031,379
Distributions reinvested	46,804	1,036,235	41,745	1,247,762
Repurchased	(75,908)	(1,829,451)	(357,019)	(11,172,293)
Net increase (decrease)	104,167	\$2,381,953	(247,334)	\$(7,893,152)
Class R2 shares				
Sold	847	\$20,724	1,554	\$41,407
Distributions reinvested	592	12,956	343	10,189
Repurchased	(243)	(5,845)	(65)	(1,854)
Net increase	1,196	\$27,835	1,832	\$49,742
Class R4 shares				
Distributions reinvested	76	\$1,677	64	\$1,912
Repurchased	—	—	(38)	(1,096)
Net increase	76	\$1,677	26	\$816

	Six Months Ended 2-28-23		Year Ended 8-31-22	
	Shares	Amount	Shares	Amount
Class R6 shares				
Sold	889	\$21,189	1,486	\$44,754
Distributions reinvested	1,324	29,443	1,031	30,910
Repurchased	(2,749)	(65,511)	(2,016)	(64,840)
Net increase (decrease)	(536)	\$(14,879)	501	\$10,824
Class 1 shares				
Sold	66,475	\$1,680,845	71,173	\$2,160,985
Distributions reinvested	90,467	2,029,166	85,529	2,585,554
Repurchased	(108,206)	(2,680,952)	(301,917)	(8,998,648)
Net increase (decrease)	48,736	\$1,029,059	(145,215)	\$(4,252,109)
Total net increase (decrease)	652,357	\$13,256,510	(278,048)	\$(7,850,198)

Affiliates of the fund owned 33%, 67% and 100% of shares of Class R2, Class R4 and Class 1, respectively, on February 28, 2023. Such concentration of shareholders' capital could have a material effect on the fund if such shareholders redeem from the fund.

Note 6 — Purchase and sale of securities

Purchases and sales of securities, other than short-term investments, amounted to \$47,136,806 and \$64,359,096, respectively, for the six months ended February 28, 2023.

SPECIAL SHAREHOLDER MEETING

(Unaudited)

The fund held a Special Joint Meeting of Shareholders on Friday, September 9, 2022. The following proposals were considered by the shareholders:

Proposal 1: To elect eight Trustees as members of the Board of Trustees of the Trust.

THE PROPOSAL PASSED ON September 9, 2022.

	Total votes for the nominee	Total votes withheld from the nominee
Independent Trustees		
James R. Boyle	4,554,825,588.937	109,369,198.953
Noni L. Ellison	4,545,310,789.674	118,883,998.216
Dean C. Garfield	4,542,518,756.422	121,676,031.468
Patricia Lizarraga	4,547,597,042.403	116,597,745.487
Frances G. Rathke	4,553,474,902.143	110,719,885.747
Non-Independent Trustees		
Andrew G. Arnott	4,548,263,383.010	115,931,404.880
Marianne Harrison	4,552,282,391.834	111,912,396.056
Paul Lorentz	4,546,227,532.263	117,967,255.627

Proposal 2: To approve an amendment to the Declaration of Trust revising merger approval requirements.

THE PROPOSAL PASSED ON September 9, 2022.

	Shares voted	% Of shares voted	% Of outstanding shares
For	4,061,202,897.967	87.072%	64.635%
Against	75,620,339.593	1.622%	1.203%
Abstain/Withheld	92,916,059.460	1.992%	1.478%
Broker Non-Vote	434,455,490.870	9.314%	6.914%

More information

Trustees

Hassell H. McClellan, *Chairperson*
Steven R. Pruchansky, *Vice Chairperson*
Andrew G. Arnott[†]
James R. Boyle
William H. Cunningham^{*}
Grace K. Fey
Noni L. Ellison[^]
Dean C. Garfield[^]
Marianne Harrison[†]
Deborah C. Jackson
Patricia Lizarraga^{†,^}
Paul Lorentz[†]
Frances G. Rathke^{*}
Gregory A. Russo

Officers

Andrew G. Arnott
President
Charles A. Rizzo
Chief Financial Officer
Salvatore Schiavone
Treasurer
Christopher (Kit) Sechler
Secretary and Chief Legal Officer
Trevor Swanberg
Chief Compliance Officer

[†] Non-Independent Trustee

^{*} Member of the Audit Committee

[^] Elected to serve as Independent Trustee effective as of September 9, 2022.

[‡] Elected to serve as Non-Independent Trustee effective as of September 9, 2022.

The fund's proxy voting policies and procedures, as well as the fund proxy voting record for the most recent twelve-month period ended June 30, are available free of charge on the Securities and Exchange Commission (SEC) website at [sec.gov](https://www.sec.gov) or on our website.

All of the fund's holdings as of the end of the third month of every fiscal quarter are filed with the SEC on Form N-PORT within 60 days of the end of the fiscal quarter. The fund's Form N-PORT filings are available on our website and the SEC's website, [sec.gov](https://www.sec.gov).

We make this information on your fund, as well as **monthly portfolio holdings**, and other fund details available on our website at jhinvestments.com or by calling 800-225-5291.

Investment advisor

John Hancock Investment Management LLC

Subadvisor

GW&K Investment Management, LLC

Portfolio Managers

Joseph C. Craigen, CFA
Daniel L. Miller, CFA

Principal distributor

John Hancock Investment Management Distributors LLC

Custodian

State Street Bank and Trust Company

Transfer agent

John Hancock Signature Services, Inc.

Legal counsel

K&L Gates LLP

You can also contact us:

800-225-5291

jhinvestments.com

Regular mail:

John Hancock Signature Services, Inc.
P.O. Box 219909
Kansas City, MO 64121-9909

Express mail:

John Hancock Signature Services, Inc.
430 W 7th Street
Suite 219909
Kansas City, MO 64105-1407

Protect yourself by using eDelivery

Signing up for the electronic delivery of your statements and other financial publications is a great way to help protect your privacy. eDelivery provides you with secure, instant access to all of your statements in one convenient location.

BENEFITS OF EDELIVERY

- **Added security:** Password protection helps you safely retrieve documents online
- **Save time:** Receive instant email notification once statements are available
- **Reduce clutter:** View documents online to reduce the amount of paper for filing, shredding, or recycling

Sign up for **eDelivery**.
Fast. Simple. Secure.
jhinvestments.com/login

SIGN UP FOR EDELIVERY TODAY!

Direct shareholders

If you receive statements directly through John Hancock Investment Management and would like to participate in eDelivery, go to **jhinvestments.com/login**. To log in to your account, click on the "Log in" button on the page's top right corner. In the "Access your investments account" area, go to the "Individual retirement or mutual fund account" section and select the option that applies to you. Please be aware that you may be required to provide your account number and certain personal account information.

You may revoke your consent at any time by simply visiting jhinvestments.com/login and following the instructions above. You may also revoke consent by calling 800-225-5291 or by writing to us at the following address: John Hancock Signature Services, Inc., P.O. Box 219909, Kansas City, MO 64121-9909. We reserve the right to deliver documents to you on paper at any time should the need arise.

Brokerage account shareholders

If you receive statements directly from your bank or broker and would like to participate in eDelivery, go to **icsdelivery/live** or contact your financial representative.

Get your questions answered by using our shareholder resources

ONLINE

- Visit **jhinvestments.com** to access a range of resources for individual investors, from account details and fund information to forms and our latest insight on the markets and economy.
- Use our **Fund Compare** tool to compare thousands of funds and ETFs across dozens of risk and performance metrics—all powered by Morningstar.
- Visit our online **Tax Center**, where you'll find helpful taxpayer resources all year long, including tax forms, planning guides, and other fund-specific information.
- Follow us on **Facebook, Twitter, and LinkedIn** to get the latest updates on the markets and what's trending now.

BY PHONE

Call our customer service representatives at 800-225-5291, Monday to Thursday, 8:00 A.M. to 7:00 P.M., and Friday, 8:00 A.M. to 6:00 P.M., Eastern time. We're here to help!

John Hancock family of funds

U.S. EQUITY FUNDS

Blue Chip Growth
Classic Value
Disciplined Value
Disciplined Value Mid Cap
Equity Income
Financial Industries
Fundamental All Cap Core
Fundamental Large Cap Core
Mid Cap Growth
New Opportunities
Regional Bank
Small Cap Core
Small Cap Growth
Small Cap Value
U.S. Global Leaders Growth
U.S. Growth

INTERNATIONAL EQUITY FUNDS

Disciplined Value International
Emerging Markets
Emerging Markets Equity
Fundamental Global Franchise
Global Environmental Opportunities
Global Equity
Global Shareholder Yield
Global Thematic Opportunities
International Dynamic Growth
International Growth
International Small Company

FIXED-INCOME FUNDS

Bond
California Municipal Bond
Emerging Markets Debt
Floating Rate Income
Government Income
High Yield
High Yield Municipal Bond
Income
Investment Grade Bond
Money Market
Municipal Opportunities
Opportunistic Fixed Income
Short Duration Bond
Short Duration Municipal Opportunities
Strategic Income Opportunities

ALTERNATIVE FUNDS

Alternative Asset Allocation
Diversified Macro
Infrastructure
Multi-Asset Absolute Return
Real Estate Securities
Seaport Long/Short

A fund's investment objectives, risks, charges, and expenses should be considered carefully before investing. The prospectus contains this and other important information about the fund. To obtain a prospectus, contact your financial professional, call John Hancock Investment Management at 800-225-5291, or visit our website at jhinvestments.com. Please read the prospectus carefully before investing or sending money.

EXCHANGE-TRADED FUNDS

John Hancock Corporate Bond ETF
John Hancock International High Dividend ETF
John Hancock Mortgage-Backed Securities ETF
John Hancock Multifactor Developed International ETF
John Hancock Multifactor Emerging Markets ETF
John Hancock Multifactor Large Cap ETF
John Hancock Multifactor Mid Cap ETF
John Hancock Multifactor Small Cap ETF
John Hancock Preferred Income ETF
John Hancock U.S. High Dividend ETF

ASSET ALLOCATION/TARGET DATE FUNDS

Balanced
Multi-Asset High Income
Lifestyle Blend Portfolios
Lifetime Blend Portfolios
Multimanager Lifestyle Portfolios
Multimanager Lifetime Portfolios
Preservation Blend Portfolios

ENVIRONMENTAL, SOCIAL, AND GOVERNANCE FUNDS

ESG Core Bond
ESG International Equity
ESG Large Cap Core

CLOSED-END FUNDS

Asset-Based Lending
Financial Opportunities
Hedged Equity & Income
Income Securities Trust
Investors Trust
Preferred Income
Preferred Income II
Preferred Income III
Premium Dividend
Tax-Advantaged Dividend Income
Tax-Advantaged Global Shareholder Yield

John Hancock ETF shares are bought and sold at market price (not NAV), and are not individually redeemed from the fund. Brokerage commissions will reduce returns.

John Hancock ETFs are distributed by Foreside Fund Services, LLC, and are subadvised by Manulife Investment Management (US) LLC or Dimensional Fund Advisors LP. Foreside is not affiliated with John Hancock Investment Management Distributors LLC, Manulife Investment Management (US) LLC or Dimensional Fund Advisors LP.

Dimensional Fund Advisors LP receives compensation from John Hancock in connection with licensing rights to the John Hancock Dimensional indexes. Dimensional Fund Advisors LP does not sponsor, endorse, or sell, and makes no representation as to the advisability of investing in, John Hancock Multifactor ETFs.

A trusted brand

John Hancock Investment Management is a premier asset manager with a heritage of financial stewardship dating back to 1862. Helping our shareholders pursue their financial goals is at the core of everything we do. It's why we support the role of professional financial advice and operate with the highest standards of conduct and integrity.

A better way to invest

We serve investors globally through a unique multimanager approach: We search the world to find proven portfolio teams with specialized expertise for every strategy we offer, then we apply robust investment oversight to ensure they continue to meet our uncompromising standards and serve the best interests of our shareholders.

Results for investors

Our unique approach to asset management enables us to provide a diverse set of investments backed by some of the world's best managers, along with strong risk-adjusted returns across asset classes.

"A trusted brand" is based on a survey of 6,651 respondents conducted by Medallia between 3/18/20 and 5/13/20.



John Hancock Investment Management Distributors LLC, Member FINRA, SIPC
200 Berkeley Street, Boston, MA 02116-5010, 800-225-5291,
jhiinvestments.com

Manulife Investment Management, the Stylized M Design, and Manulife Investment Management & Stylized M Design are trademarks of The Manufacturers Life Insurance Company and are used by its affiliates under license.

NOT FDIC INSURED. MAY LOSE VALUE. NO BANK GUARANTEE. NOT INSURED BY ANY GOVERNMENT AGENCY.

This report is for the information of the shareholders of John Hancock New Opportunities Fund. It is not authorized for distribution to prospective investors unless preceded or accompanied by a prospectus.

A company of  **Manulife** Investment Management

MF2780199

452SA 2/23
4/2023